

FISHBONE
by
bürotime

technical document



FISHBONE



Özge Çağla Aktaş

“The Fishbone panel family has been developed to create private areas in workspaces. Its modular structure, which allows for countless combinations, can be added end-to-end in accordance with the area it will be used, providing flexible solutions. In open offices; it creates isolated workspaces that are free from distracting visual and audio problems and are suitable for focusing.”

Fishbone, which can be expanded with panels connected to vertical connecting pipes, allows to create working areas at different angles according to type of fittings. With its horizontally partitioned structure, it allows the use of different materials such as melamine, fabric, acoustic felt or plexiglass.

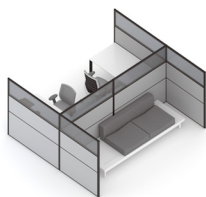
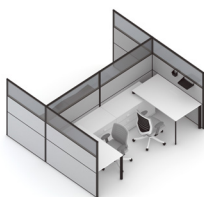
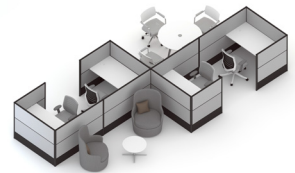
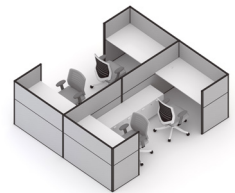
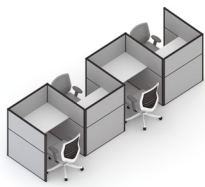




Partially or completely isolated areas can be created with height options, and different usage scenarios can be created with varying panel widths and table lengths. Thanks to the cabling system passing through the panel and the electrical power supply that can be accessed through the panel, it provides a clean and tidy working area away from clutter.



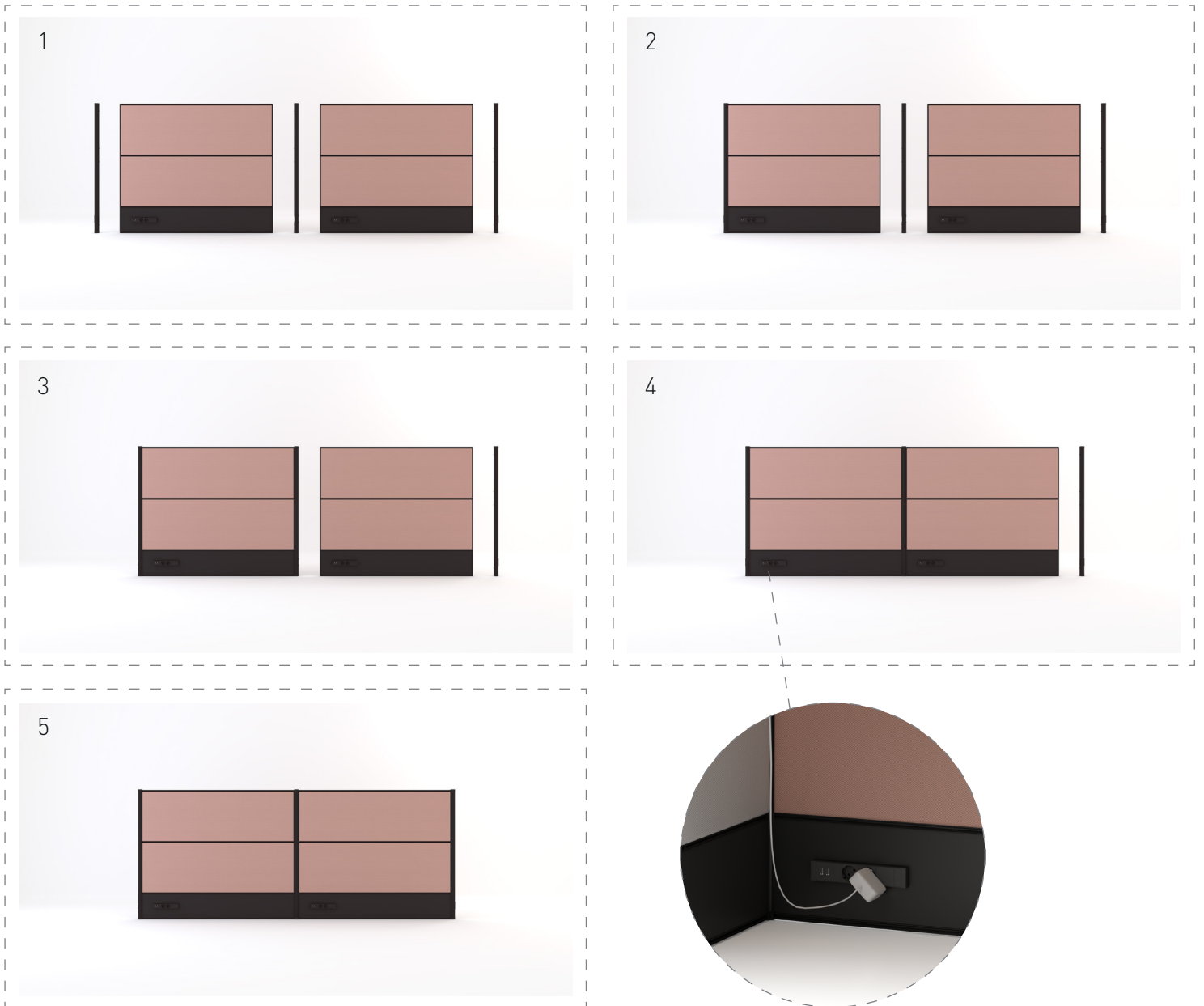
While meeting and individual workspaces are created with the rectangular table that can be mounted on the panels, honeycomb-shaped workspaces can be created with trapezeoidal tabletops.

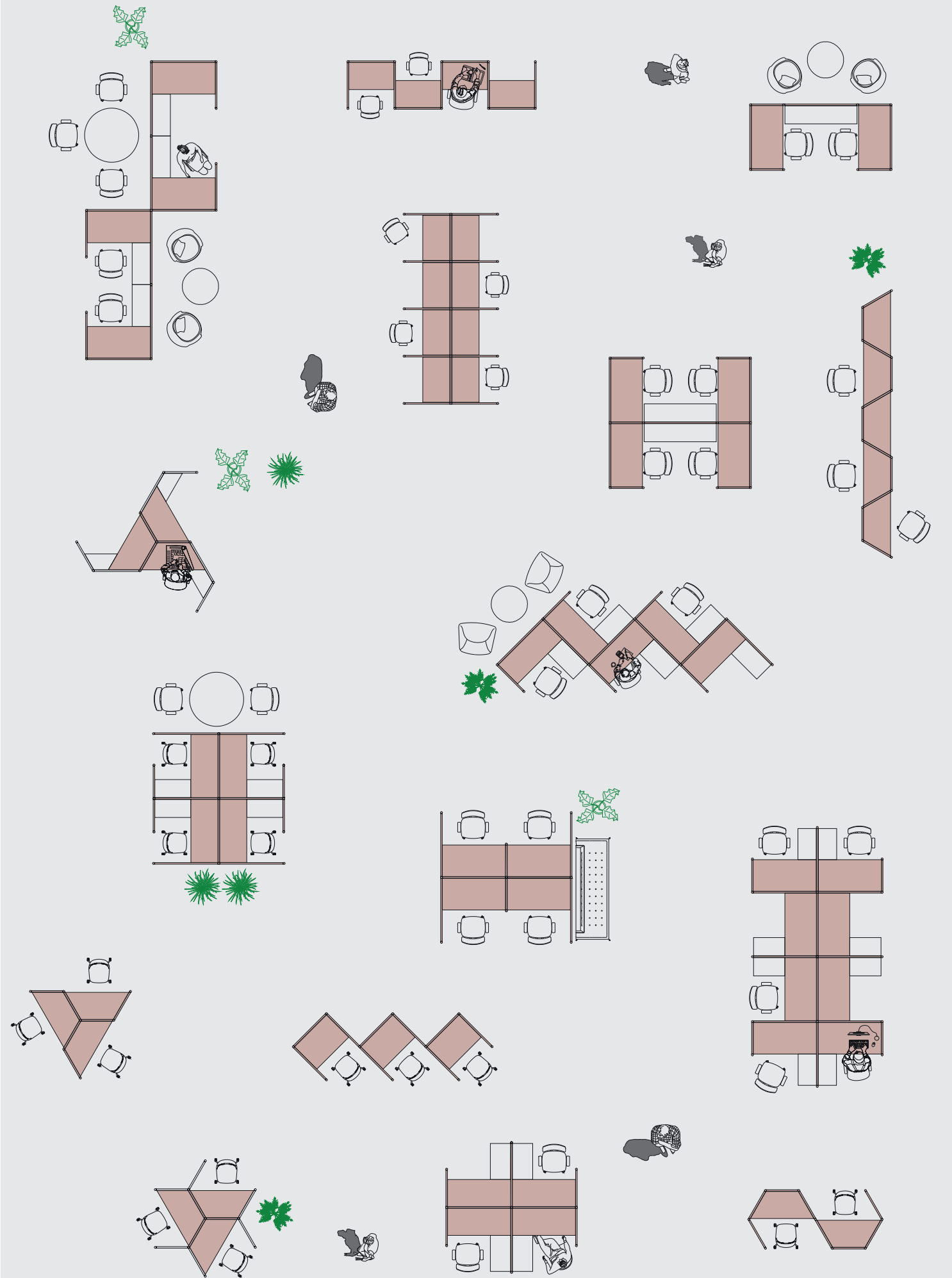


In addition to individual or teamwork setups in open workspaces, it also offers solutions suitable for common use such as call centers, libraries, and lobbies.



assembly steps _____





material options _____

two-section panel



melamine - melamine



f. fabric - melamine
s. fabric - melaminee



f. fabric - f. fabric
s. fabric - s. fabric



plexiglass - melamine



plexiglass - f. fabric
plexiglass - s. fabric

two-section panel with electrical option



melamine - melamine



f. fabric - melamine
s. fabric - melamine



f. fabric - f. fabric
s. fabric - s. fabric

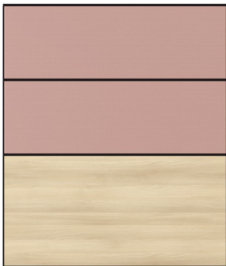


plexiglass - melamine

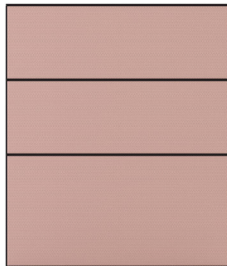


plexiglass - f. fabric
plexiglass - s. fabric

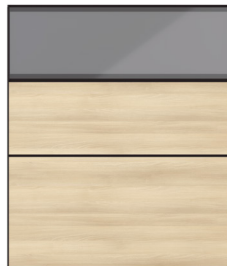
three-section panel



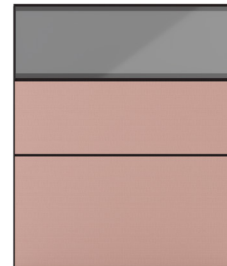
f. fabric - melamine
s. fabric - melamine



f. fabric - f. fabric
s. fabric - s. fabric

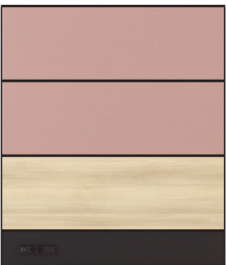


plexiglass - melamine

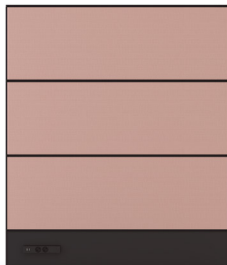


plexiglass - f. fabric
plexiglass - s. fabric

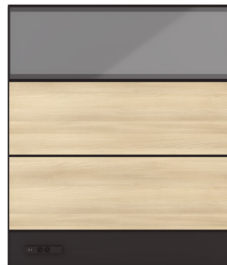
three-section panel with electrical option



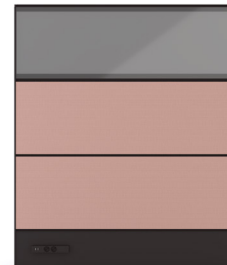
f. fabric - melamine
s. fabric - melamine



f. fabric - f. fabric
s. fabric - s. fabric



plexiglass - melamine

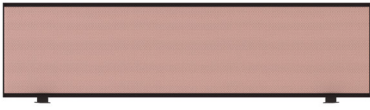


plexiglass - f. fabric
plexiglass - s. fabric

f. fabric - panama / bloom
s. fabric - sonus / aspect

material options _____

table top panel



f. fabric - s. fabric

table top

side table top



rectangle



trapeze



rectangle



trapeze

profiles



vertical end profile

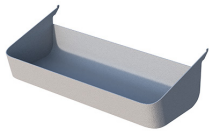


vertical connection profile

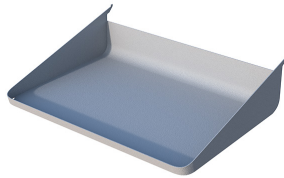
accessories



pencil holder



box



paper tray



note holder



white board



table holder

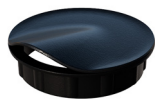
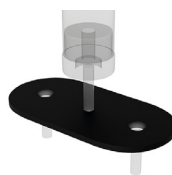


table top grommet cover



floor connector

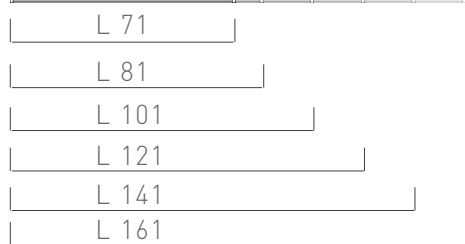
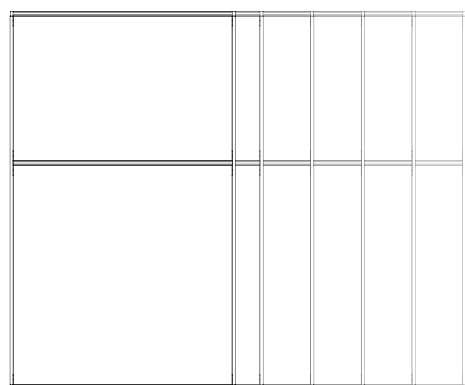
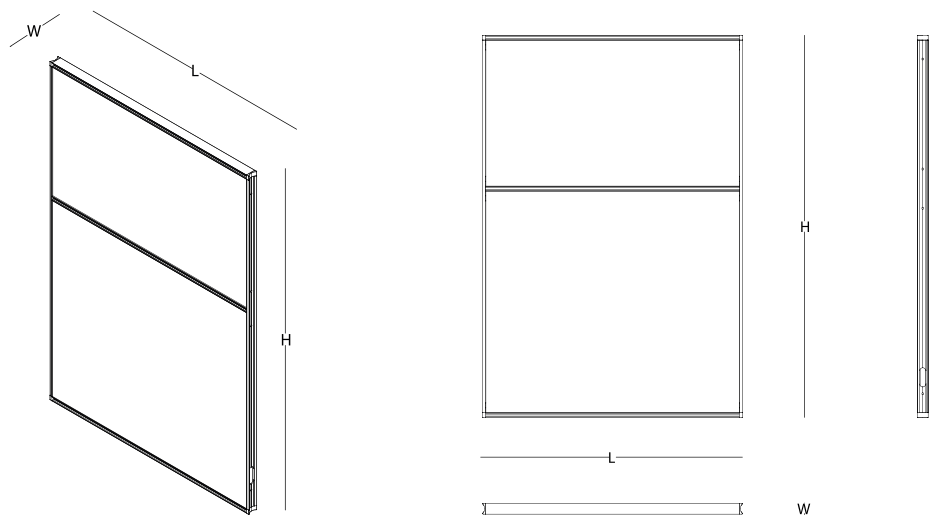


socket box

size chart

two section panel

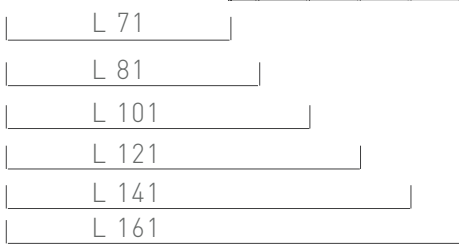
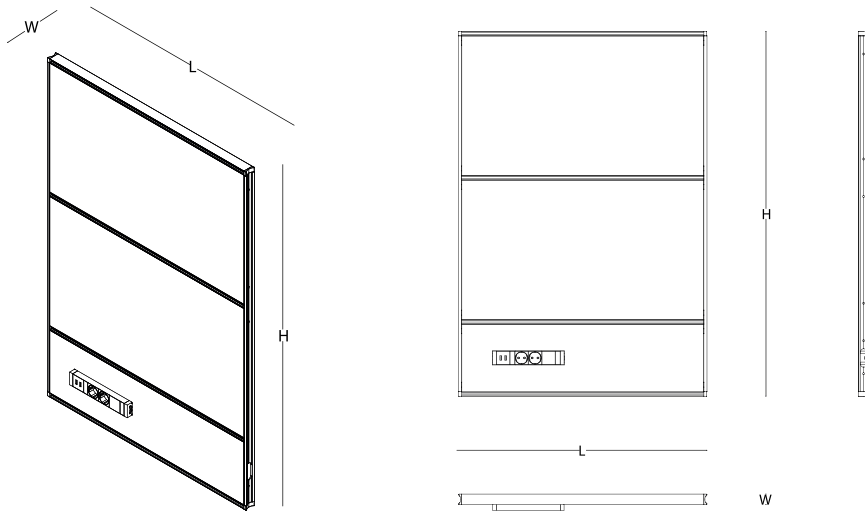
H 120 W 4,4



size chart

two-section panel with electrical option*

H 120 W 4,4

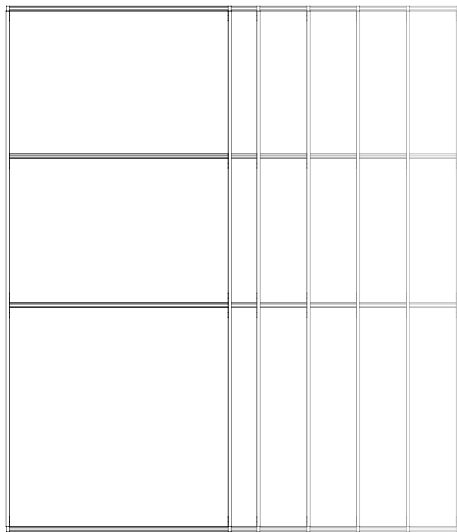
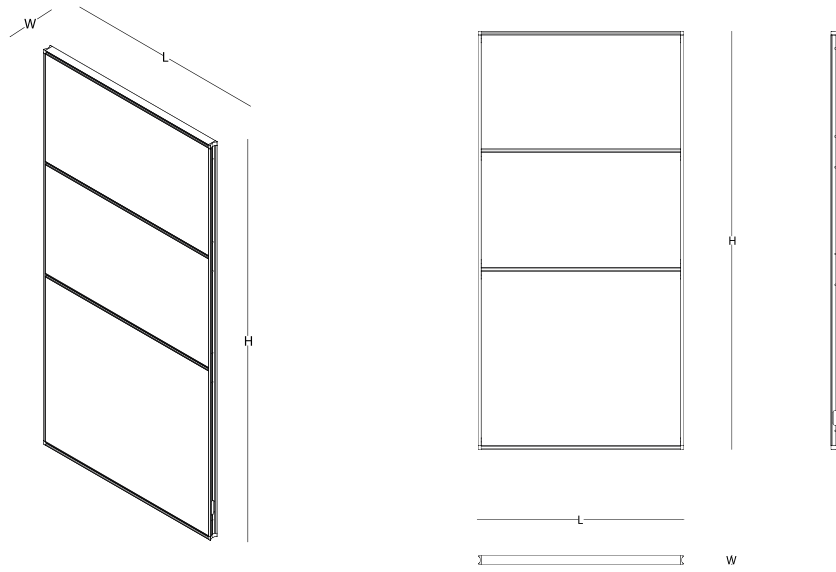


*socket box sold separately.

size chart

three-section panel

H 166,5 W 4,4

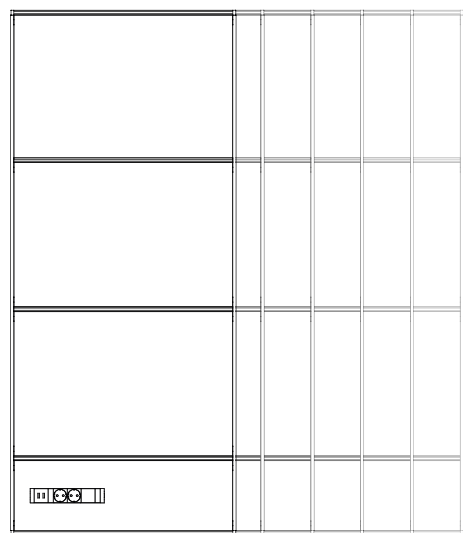
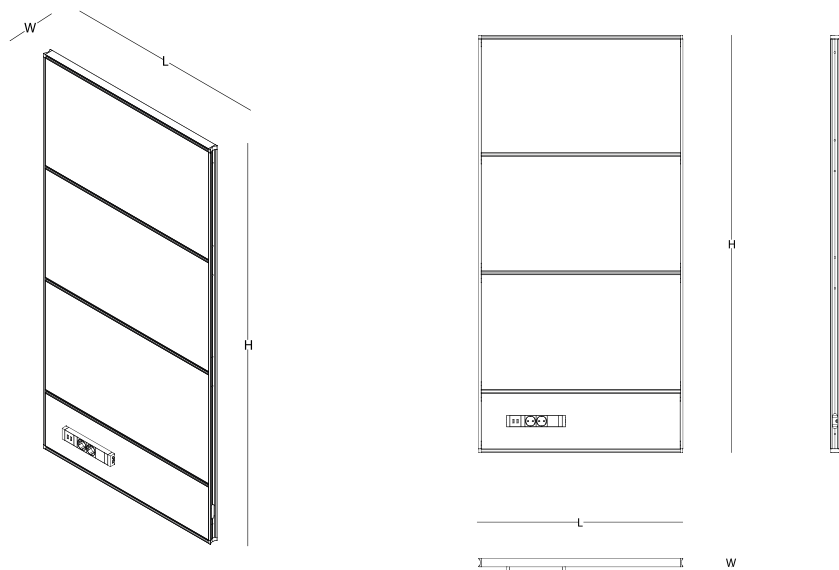


- L 71
- L 81
- L 101
- L 121
- L 141
- L 161

size chart

three-section panel with electrical option*

H 166,5 W 4,4



- L 71
- L 81
- L 101
- L 121
- L 141
- L 161

*socket box sold separately.

size chart

table top panel - f / s fabric

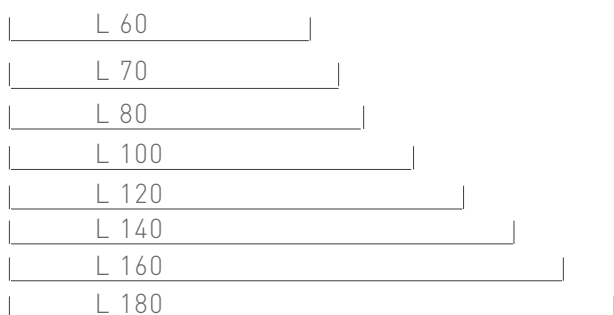
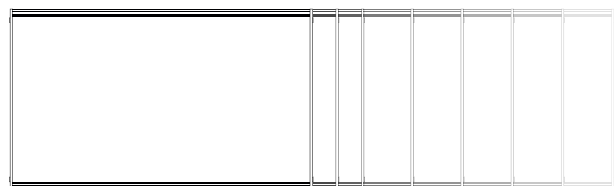
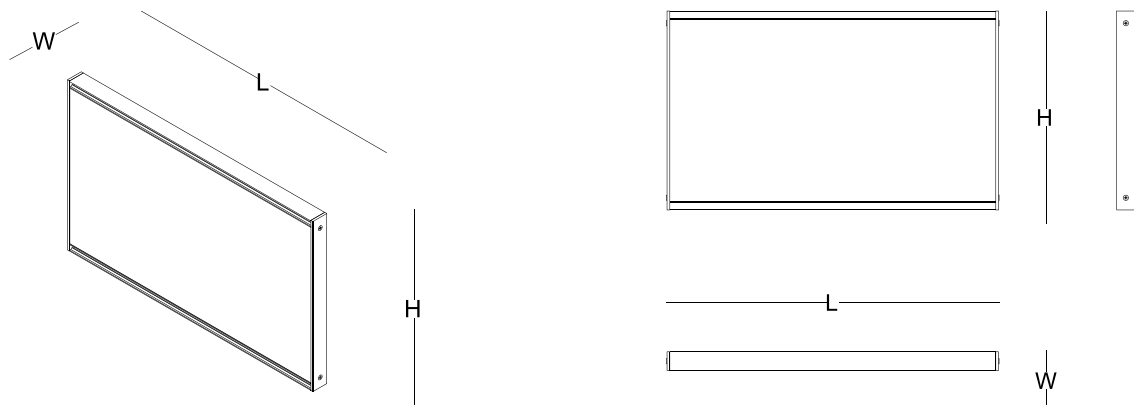
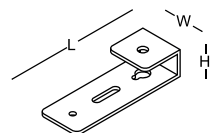
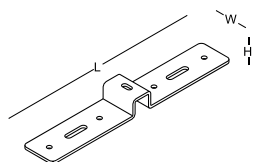


table top panel connectors

W 4 L 24 H 2

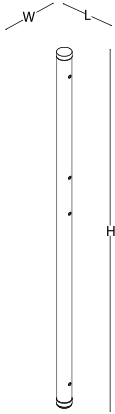
W 4 L 11 H 2,5



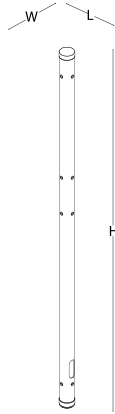
H 36
W 4

size chart

vertical end profile
H 120 / 166



vertical connection profile
H 120 / 166



Ø 42

90° two way



90° three way



90° four way



120° two way



120° three way



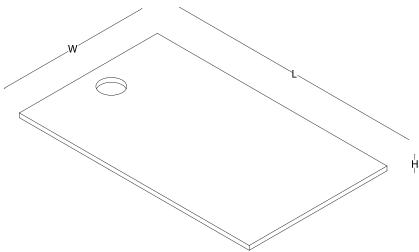
180° two way



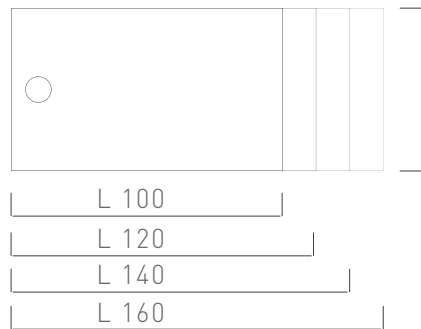
single finish



table top
rectangle - with table grommet*



H 1,8



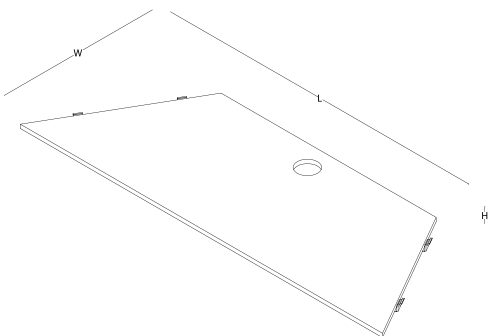
W60 / 70

L 100
L 120
L 140
L 160

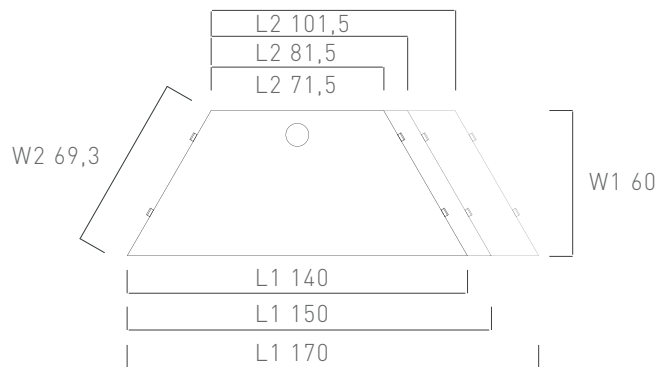
*table grommet hole is optional.

*table grommet is sold separately.

table top
trapeze - with table grommet*



H 1,8



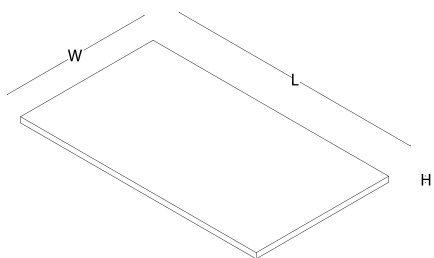
*table grommet hole is optional.

*table grommet is sold separately.

size chart

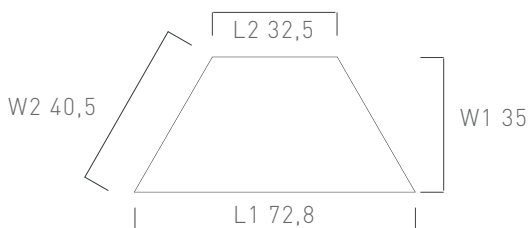
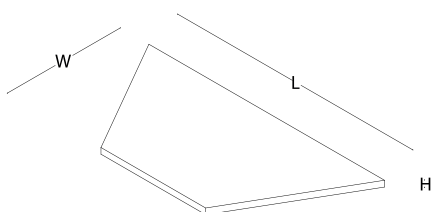
rectangle side table top

W 55 L 88 H 1,8



trapeze side table top

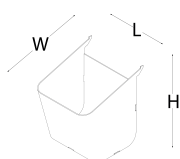
H 1,8



accessories

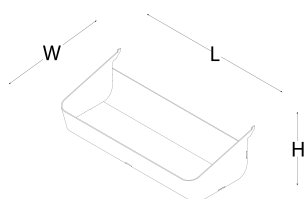
pencil holder

W 11,5 L 10,2 H 12,4



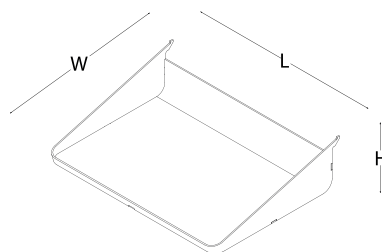
box

W 11,5 L 24,2 H 6,8



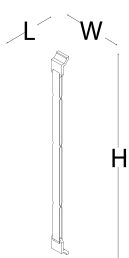
paper tray

W 23,5 L 31,3 H 7,8



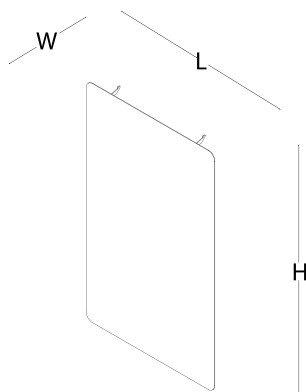
note holder

W 2 L 2 H 37



white board

W 3 L 30 H 48,2



socket box

W 4,5 L 23,2 H 4,5

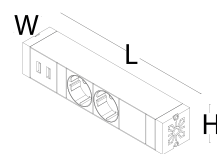


table holder

W 3,2 L 9,4 H 3,3

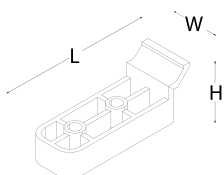
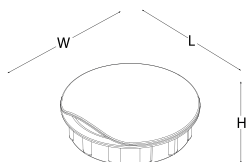


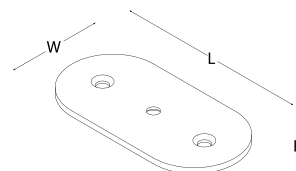
table top grommet cover

W 10,4 L 10,5 H 3,6



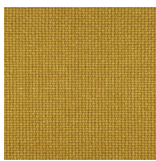
floor connection

W 80 L 16 H 0,5

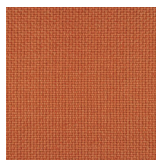


color options _____

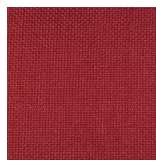
panama



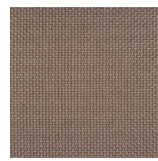
P 101
yellow



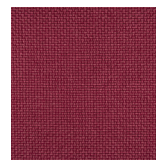
P 102
orange



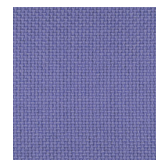
P 104
red



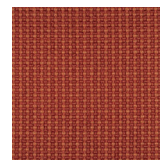
P 301
light brown



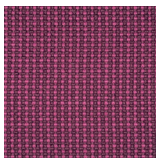
P 106
burgundy



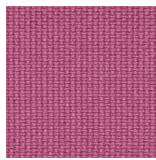
P 307
lilac



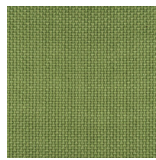
P 404
punti orange



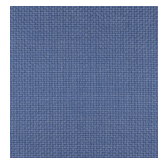
P 402
punti pink



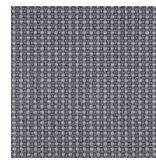
P 302
pink



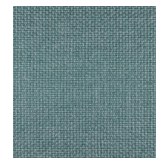
P 305
pistachio



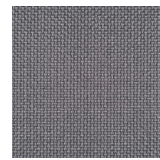
P 112
ice blue



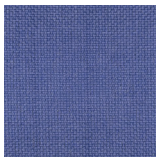
P 403
punti grey



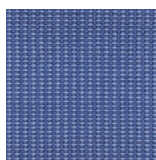
P 111
turquoise



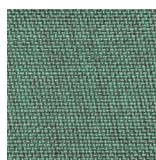
P 308
anthracite



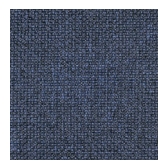
P 113
blue



P 406
punti blue



P 110
green



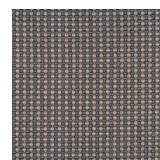
P 114
dark blue



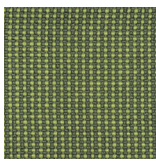
P 108
mustard



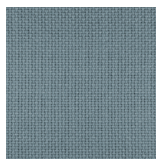
P 115
black



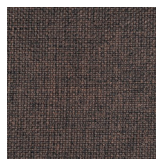
P 401
punti brown



P 405
punti green

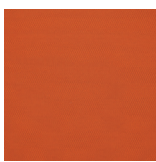


P 303
grey



P 109
dark brown

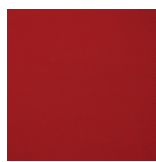
bloom _____



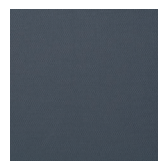
BL 2302
orange



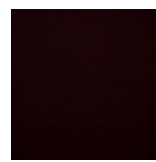
BL 2305
yellow



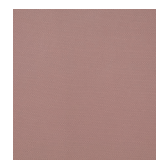
BL 2310
red



BL 2315
anthracite



BL 2316
dark brown



BL 2322
salmon



BL 2324
light grey



BL 2334
mint green



BL 2327
black



BL 2338
blue



A 110
bright green



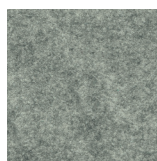
BL 2409
light brown

color options _____

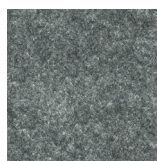
sonus



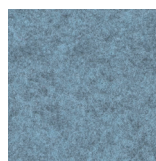
SN101
yellow



SN103
light grey



SN104
dark grey



SN106
ice blue



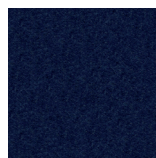
SN107
dark beige



SN111
turquoise



SN112
apple green



SN116
navy blue

aspect



ACT 02
orange



ACT 03
red



ACT 04
burgundy



ACT 05
rosa



ACT 07
pink



ACT 08
caramel



ACT 11
light brown



ACT 13
yellow



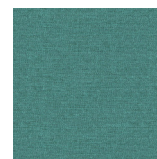
ACT 15
brown



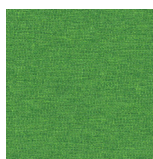
ACT 17
sage



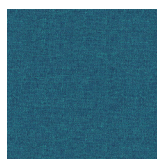
ACT 18
olive



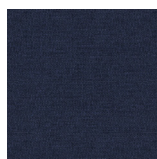
ACT 20
mint



ACT 21
pistachio



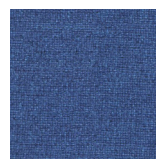
ACT 23
turquoise



ACT 24
dark blue



ACT 26
denim



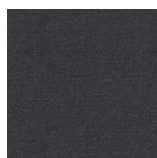
ACT 27
blue



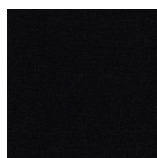
ACT 28
grey



ACT 29
smoked

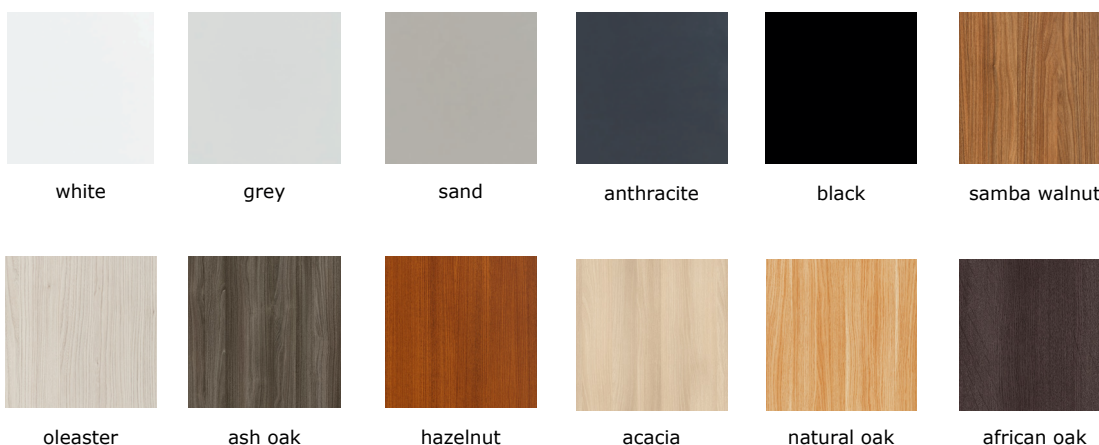


ACT 30
anthracite

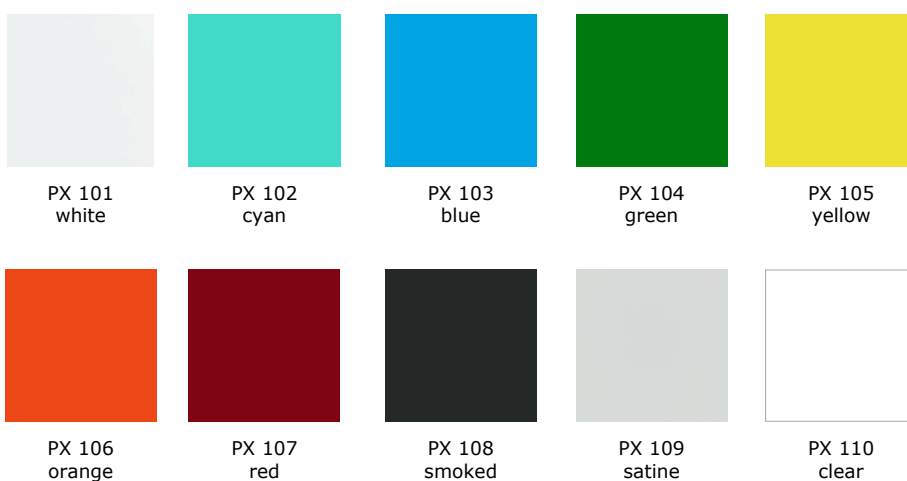


ACT 31
black

color options _____ melaminee (panel - table top- side table top)



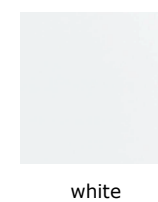
plexiglassglass (panel)



metal (pencil holder, box, paper tray, note holder)



metal (white board)



plastic (table top holder - grommet) metal profile (anodized)

